



R4/R8 Compact Powered Line Array



R4/R8 Compact Powered Line Array

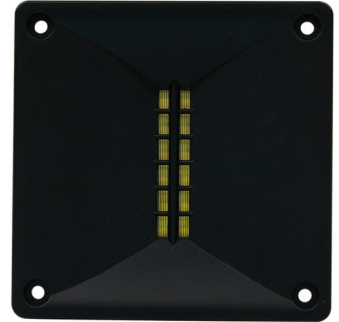
The R4/R8 Powered Compact Line Array System is the ultimate solution for sound reinforcement where optimum energy control is required. The system comprises of an internal 600W amplifier, subwoofer, four full-range line array cabinets, and programmable DSP control. The cabinets are mechanically connected using a three-point suspension system, and integral rigging allows flexibility in a variety of array configurations. The R4/R8 Powered Compact Line Array System is suitable for Halls, Auditoriums, Performing Arts, Houses of Worship and other medium sized venues.



R4 | Four full-range loudspeakers deliver clear, powerful audio at high SPL and can be stacked together to form multi-cluster setups for individual applications. The bracketry provides fine vertical splay angle adjustments at 1° intervals.



R8 | The active bass enclosure houses two 8" low frequency drivers, pre-amp, output power amplifier & DSP. The integrated system processes the input signal and distributes via the power amplifier to all 5 speakers.



Ribbon Tweeter | The four full-range loudspeakers utilise custom ribbon tweeters, with extremely flat response curves. The lightweight transducer ensures excellent transient response.

Key Features & Benefits

- Each system comes complete with subwoofer, 4 mid-high line array cabinets, internal power amplification, DSP control, all rigging hardware and connecting speaker cables
- Compact design for medium scale sound reinforcement
- Internal amplification, programmable DSP control, (via USB or RS-232 port) gain, crossover, equalisation, compressor/limiter, and time alignment
- Software included
- Rear panel peak level indicator, level control
- Two 8" low frequency drivers (R8 active amplification module)
- Two 4" mid frequency drivers and one high frequency ribbon driver in each R4 line array module
- 120° controlled horizontal coverage
- Splay angle adjustable in 1° steps
- XLR line input with XLR "loop through"
- Mechanically connected cabinet design with three-point suspension system allowing flexibility in a variety of array configurations

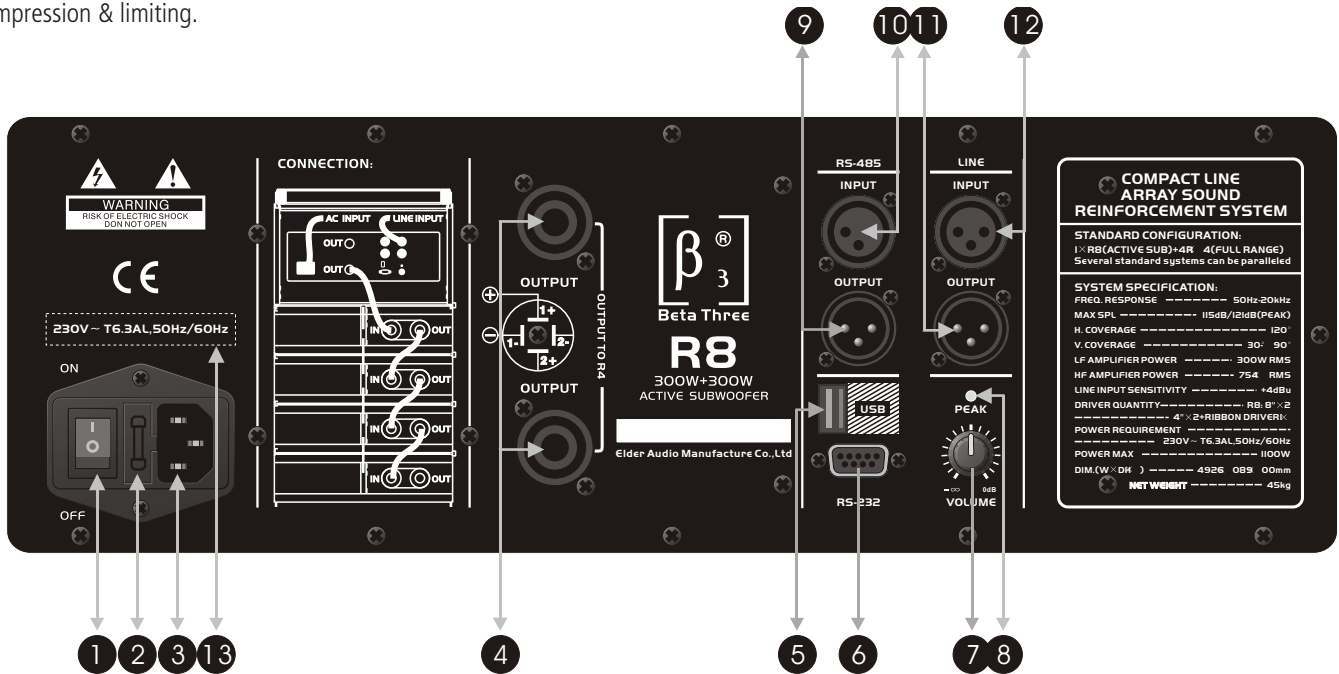
Unique Speaker Design | Utilising a unique thin foam surround and specially coated paper speaker cone results in efficient reduction of harmonic distortion.



Active Amplifier & DSP

DSP and linear amplification technology are integrated into the R8 active amplifier module. With a total power handling of 600W RMS, the amplifier can drive the entire 5 speaker cluster at the same time. With USB & RS-485 connections for remote PC control, the included software helps to achieve all-round control over frequency response, delay, crossover, equalisation, gain, compression & limiting.

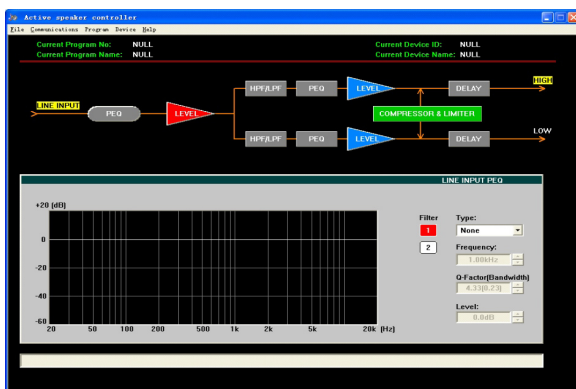
The DSP module is protected by a metal casing which shields the interface from interference. The system is kept stable and reliable by the built-in cooling system which is equipped with both aluminum heat-sink and a stepless/brushless fan for quiet, continuous operation.



- | | | |
|---------------------------------|--------------------------|--------------------------|
| 1. Power On/Off Switch | 6. RS-232 Port | 11. Line Output |
| 2. Fuse | 7. Volume | 12. Line Input |
| 3. Power Input Socket | 8. Signal Peak Indicator | 13. AC Input Information |
| 4. Signal Output (NL4 Socket) | 9. RS-485 Output | |
| 5. USB Port | 10. RS-485 Input | |

DSP Software Features

- Built-in high performance DSP
- 24 bit AD/DA converters
- Precise filter algorithm and gain control
- Intelligent protection system
- Several optional filters which are available for specific applications upon request
- 6 configuration modes which can be saved for convenient use at any moment.
- Configuration mode updates which can be downloaded from the manufacturer's website
- Connection to any Windows based PC via USB or RS-232 port
- Multiple units can be controlled by linking via RS485



DSP Software Interface | The active module with built-in DSP processor manages and adjusts HF and LF drivers separately. It includes control for gain, crossover, equalisation, compression, limiting, delay and phase inversion. The integrated testing and control software helps provide maximum protection for your system.

Amplifier Specifications

Low Frequency Power Amplifier

Distortion limit output power (0.5% THD @ 630Hz)	300W
Load Impedance	4Ω
Distortion (THD)	0.1%
Protection	Output maladjustment protection DC protection, Input signal limiting, Overload protection Overheat protection Power on/off pop elimination

Pre Amplifier

Input Sensitivity:	0.775V
Crossover Point:	2kHz
Input Impedance:	10KΩ (Balanced)
Power Supply:	AC 230V/50Hz

Full Range Power Amplifier

Distortion limit output power (0.5% THD @ 630Hz)	300W
Load Impedance	4Ω
Distortion (THD)	0.1%
Protection	Output maladjustment protection DC protection, Input signal limit, Overload protection Overheat protection Power on/off pop elimination

Control/Connection

Knob:	Volume
Indicator:	Peak Indicator
Input Connector:	XLR
Output Connector:	1 x male XLR (Input) 2 x NL4 Output per cabinet

System Specifications

Frequency Response (-3dB):	50Hz-40KHz
Rated Power (RMS):	R8 (LF): 300W, R4 (M/H): 300W
Rated SPL (1W @ 1m)	115dB
Maximum SPL (1W @ 1m)	121dB
Crossover Point:	LF/MF 125Hz MF/ HF 3.2kHz
Input Impedance:	10KΩ
Dispersion (H x V):	120° x (30° - 90°) adjustable
Connector:	NL4
Power supply:	AC 230V /50Hz
Dimensions (W x D x H):	492mm x 608mm x 900mm
Packaging Dimensions (1set/pack):	696mm x 696mm x 580mm
Net Weight (1set/pack):	45Kg
Gross Weight (1set/pack):	50Kg

Cabinet Dimensions

